

Paper Reference(s) 1SC0/1BF
Pearson Edexcel Level 1/Level 2 GCSE (9–1)

Combined Science
PAPER 1
Foundation Tier

Friday 10 May 2024 – Morning

Time: 1 hour 10 minutes

Diagram Booklet

THIS DIAGRAM BOOKLET MUST BE RETURNED WITH THE QUESTION PAPER AT THE END OF THE EXAMINATION.

In the boxes below, write your name, centre number and candidate number.

Surname					
Other names					
Centre Number					
Candidate Number					

INSTRUCTIONS

There may be spare copies of some diagrams in case you need them.

CONTENTS

Page

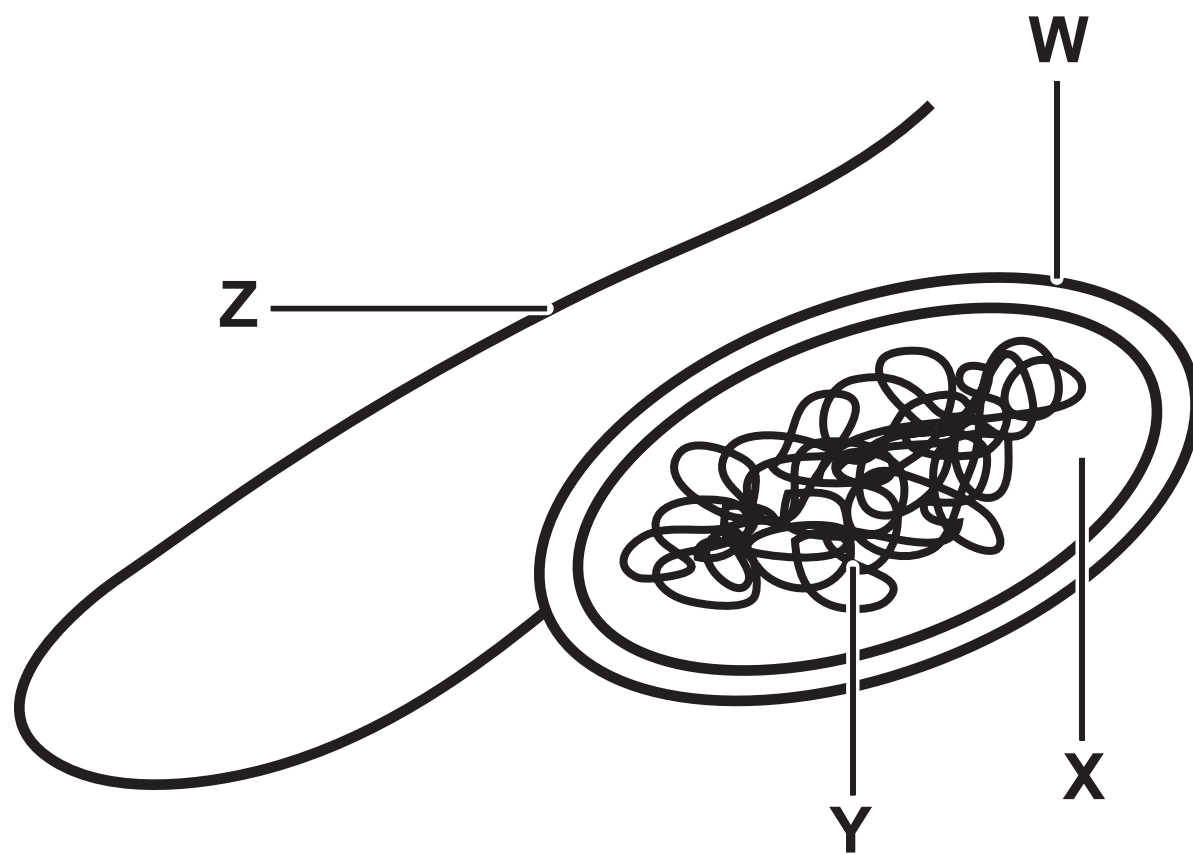
3	Question 1(a)
4	Question 1(b)
5–6	Question 2
7	Question 2(b)
8	Question 3
9	Question 3(c)
10	Question 4(b)
11	Question 4(d)
12	Question 5(a)
13	Question 5(b)
14	Question 6(b)
15	Question 6(d)(ii)

Spare Copies

16	Question 1(b)
17	Question 3(c)
18	Question 5(a)

Question 1(a)

FIGURE 1



Question 1(b)

body defence

function

● moves pathogens away from the lungs

● makes antibodies

● destroys pathogens in the stomach

● makes antigens

● stops pathogens entering the body

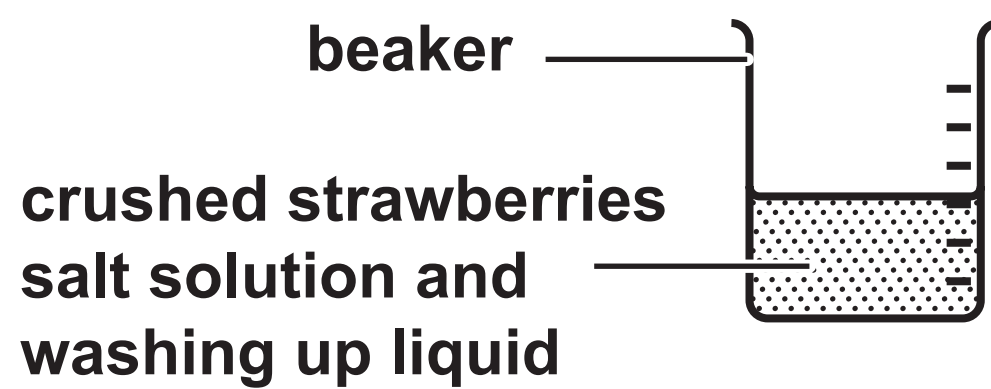
hydrochloric acid

skin

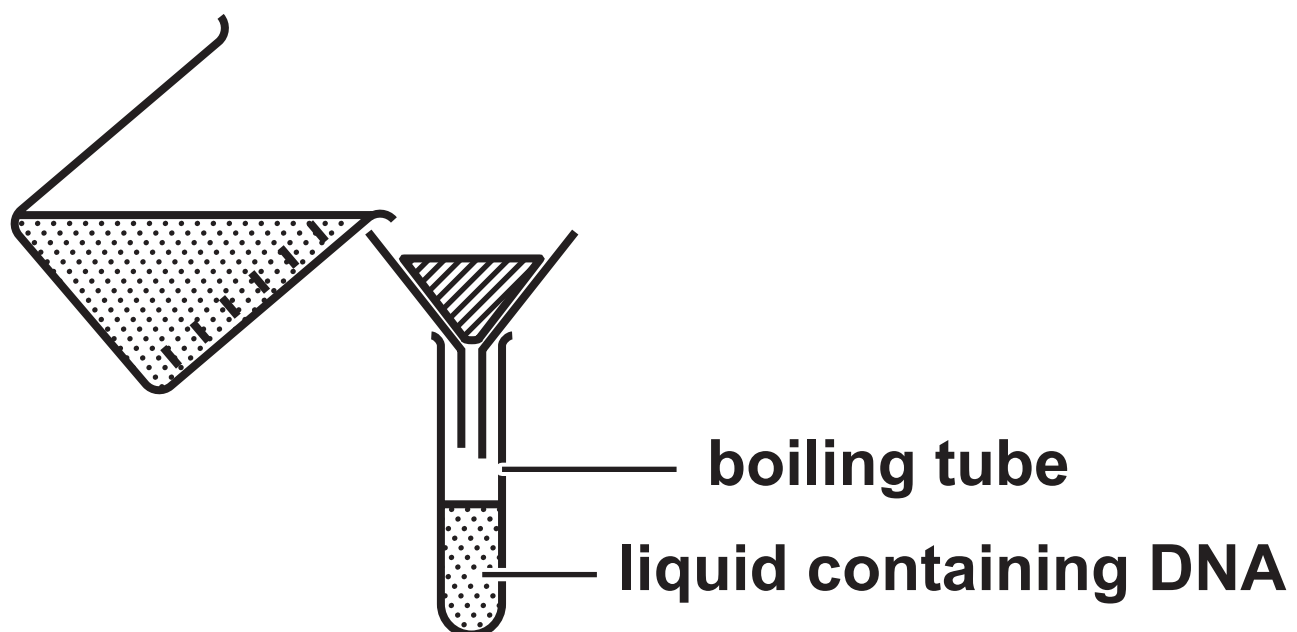
Question 2

FIGURE 2

STAGE 1

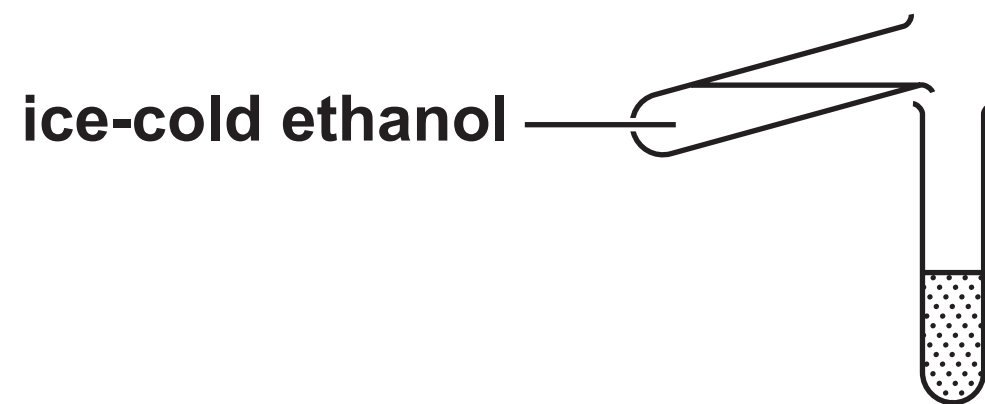
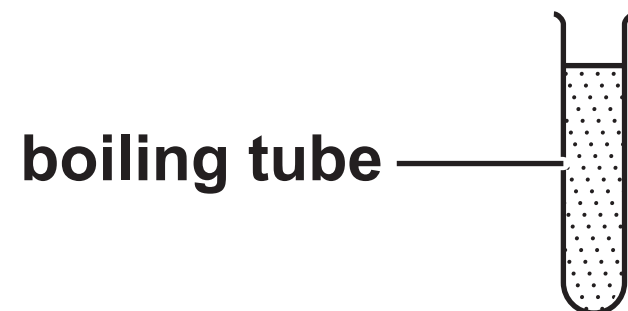


STAGE 2



(continued on the next page)

Turn over

Question 2 continued.**STAGE 3****STAGE 4**



Question 2(b)

FIGURE 3

strawberry	mass of DNA in ng
1	11·8
2	6·5
3	5·9
4	1·4

Question 3

FIGURE 4

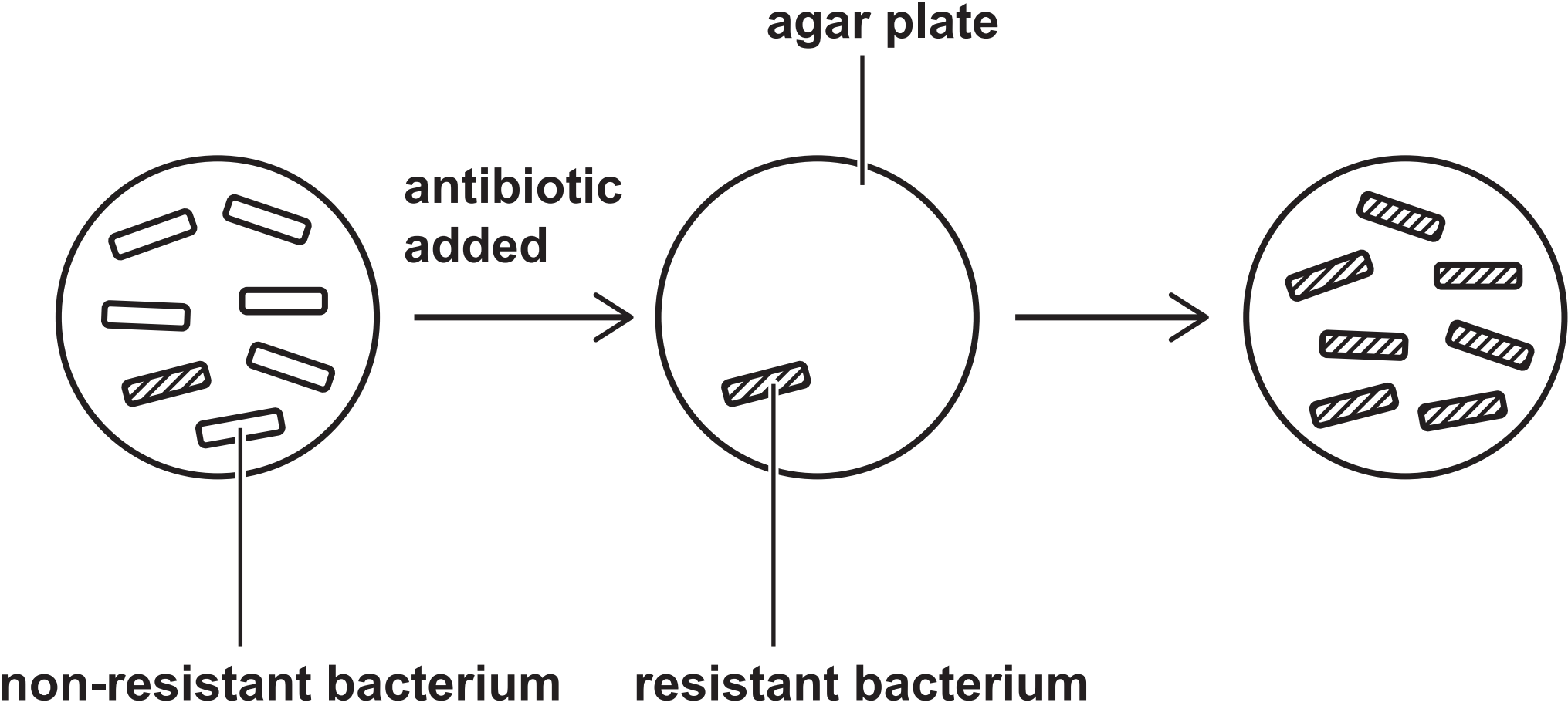
information	red junglefowl	domesticated chicken
photograph		
mass of adult in kg	0.75 to 1.2	2.5 to 3.0
number of eggs laid per year	10 to 15	250 to 300

Question 3(c)

type of cell produced	type of cell division	number of daughter cells produced
body cell	mitosis	
gamete		

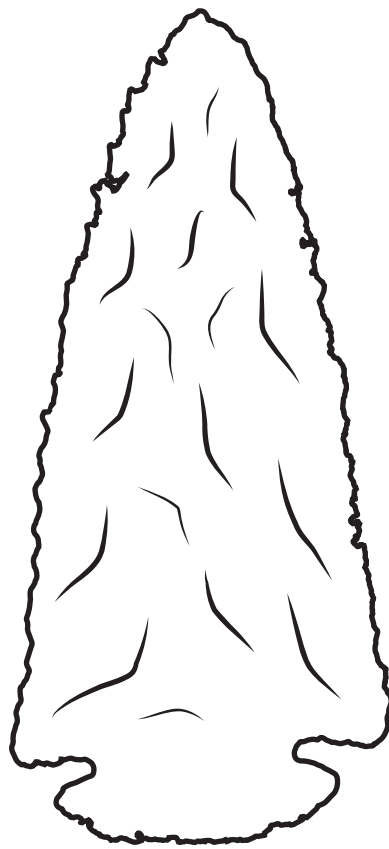
Question 4(b)

FIGURE 5

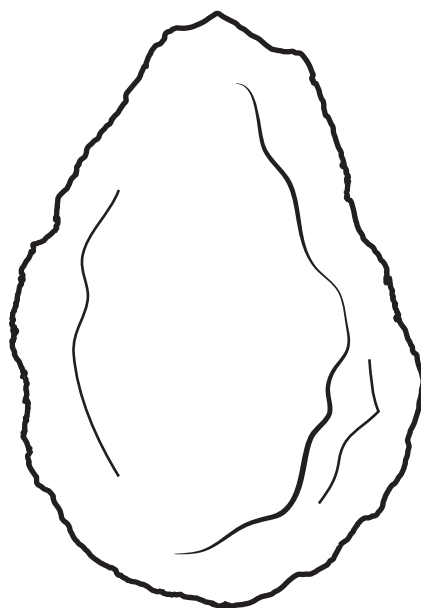


Question 4(d)**FIGURE 6**

tool A
approximately
4 000 years old

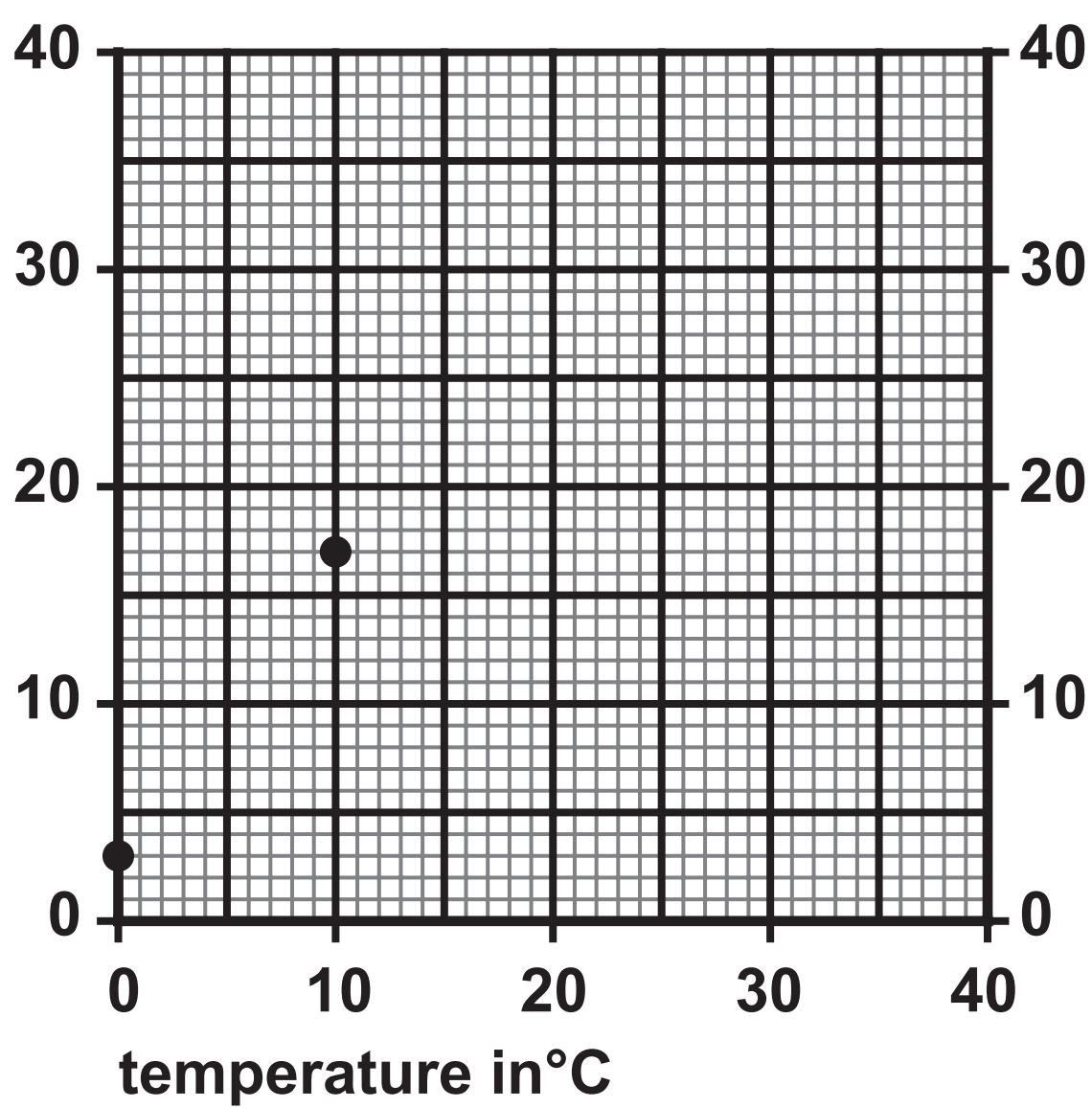


tool B
approximately
100 000 years old



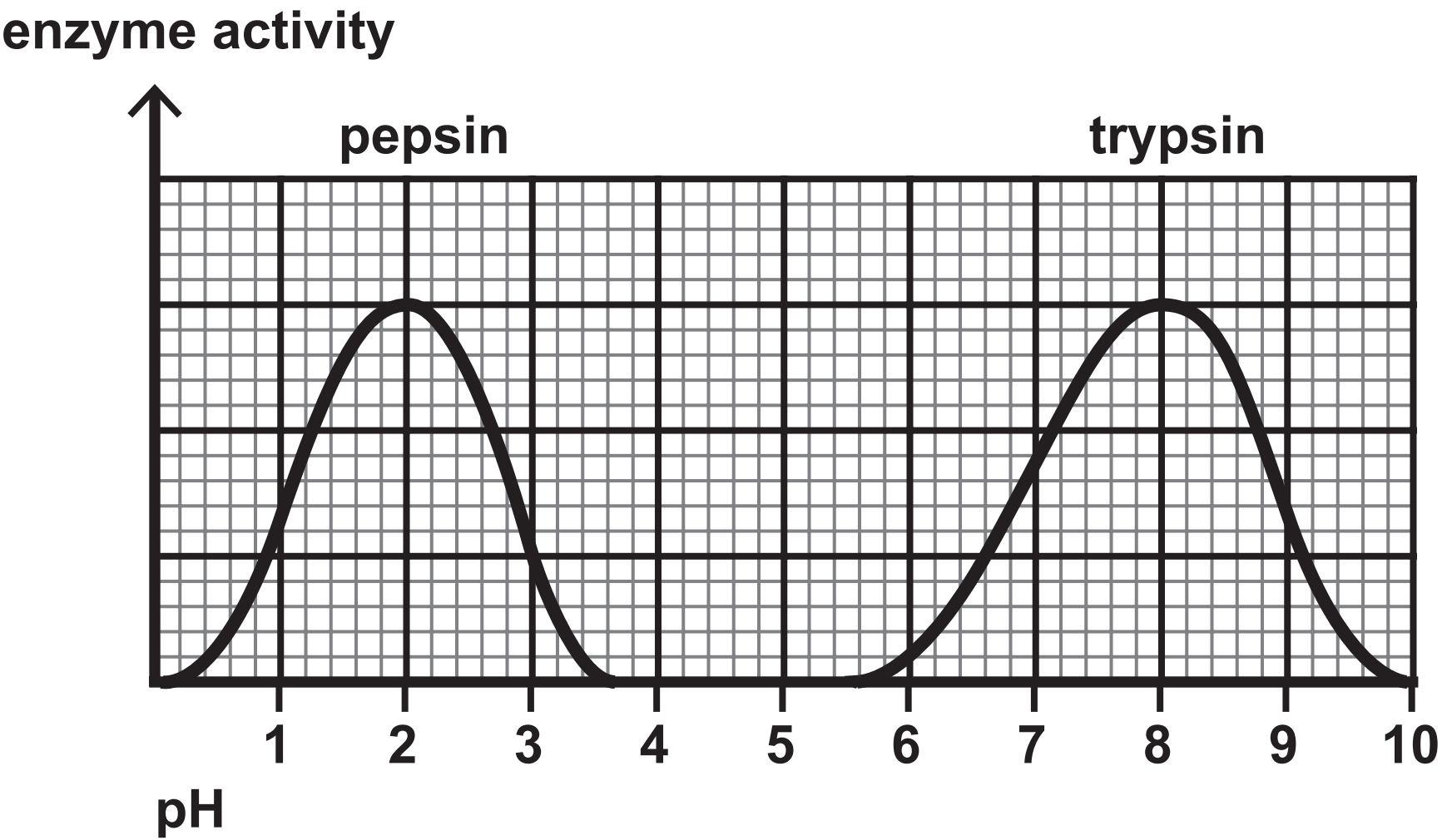
Question 5(a)

rate of reaction in mg per minute



Question 5(b)

FIGURE 8



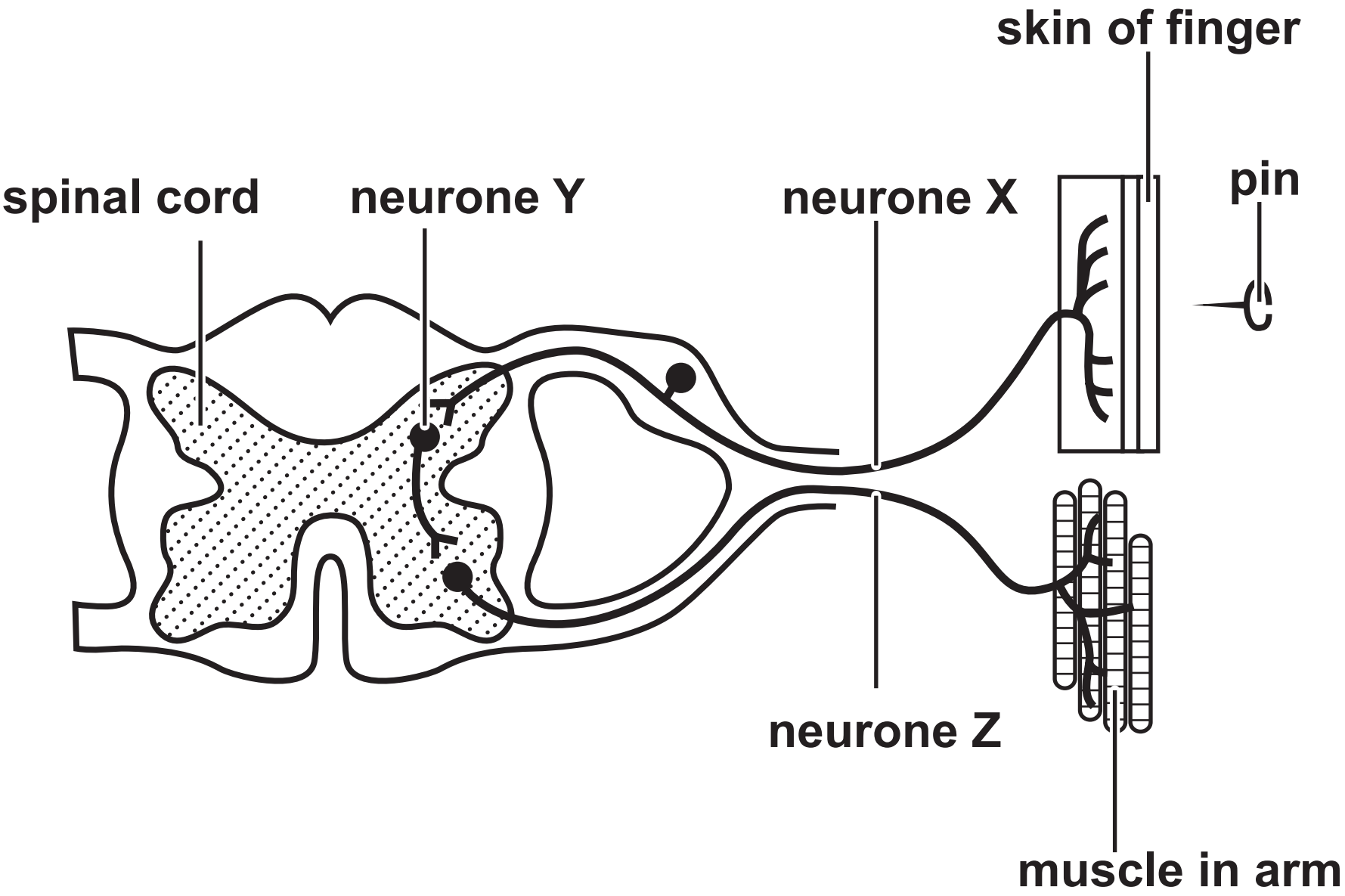
Question 6(b)

FIGURE 9

year	number of measles cases reported
1985	97 408
1995	7 447
2005	2 089
2015	1 193

Question 6(d)(ii)

FIGURE 10



Question 1(b)

body defence

hydrochloric acid

skin

function

● moves pathogens away from the lungs

● makes antibodies

● destroys pathogens in the stomach

● makes antigens

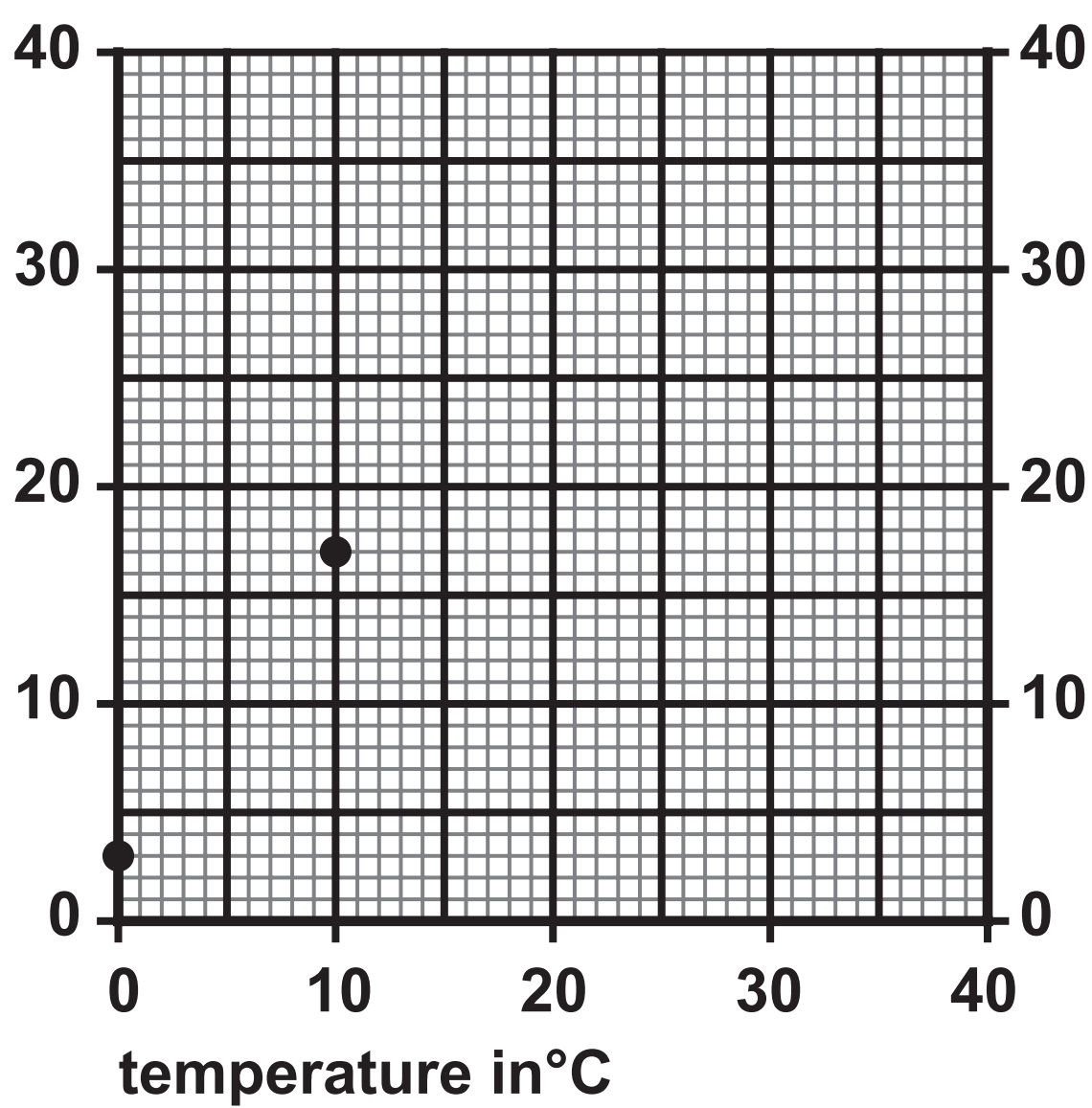
● stops pathogens entering the body

Question 3(c)

type of cell produced	type of cell division	number of daughter cells produced
body cell	mitosis	
gamete		

Question 5(a)

rate of reaction in mg per minute



Question 3

(Source: © Jamil Bin Mat Isa/Shutterstock)

(Source: © Tsekhmister/Shutterstock)

Question 4(d)

(Source adapted from: © John Kepchar/Shutterstock)

(Source adapted from: © Eduardo Estellez/Shutterstock)